

SULTANI YEĞEH ŞARKI

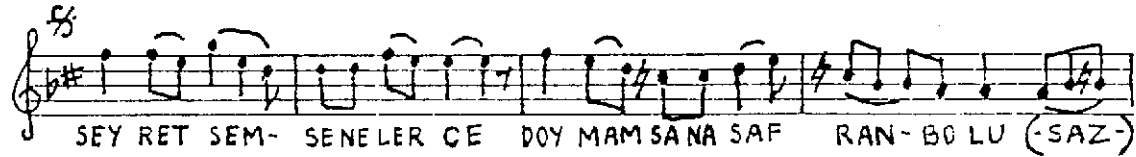
SÖZ: YAVUZ ÖZEN  
NİYAZİ ŞENGÜL  
MÜZİK: NİYAZİ ŞENGÜL 1926

♩ = 234 YÜRÜK AKSAK SEN NE GÜZEL BELDESİN

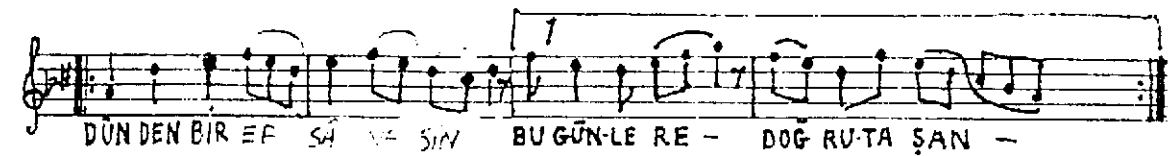
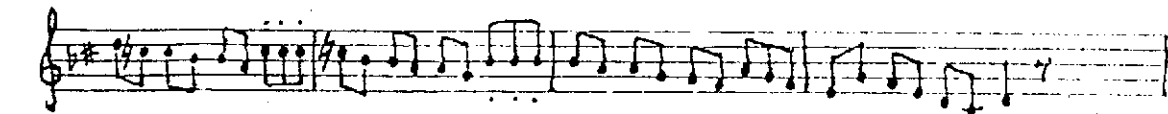
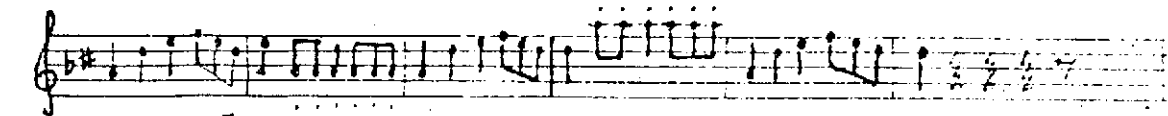


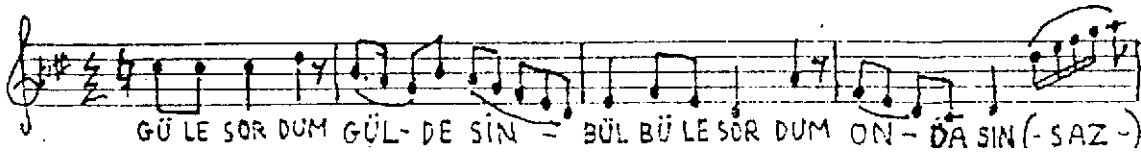
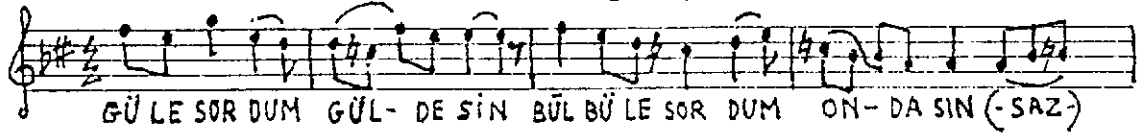
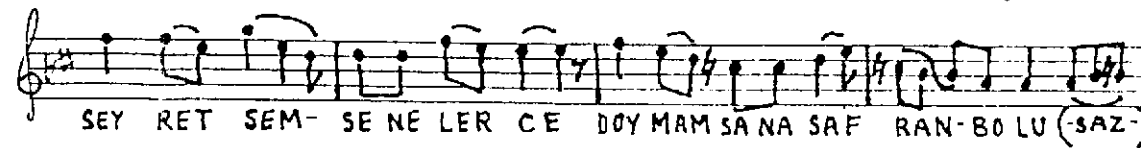
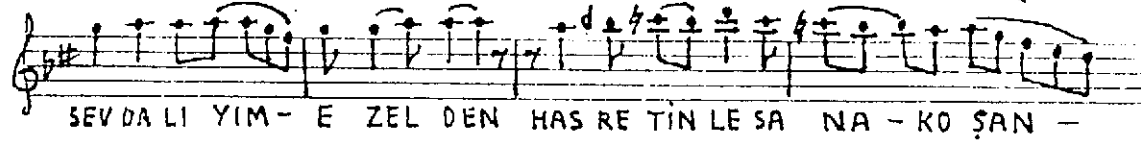
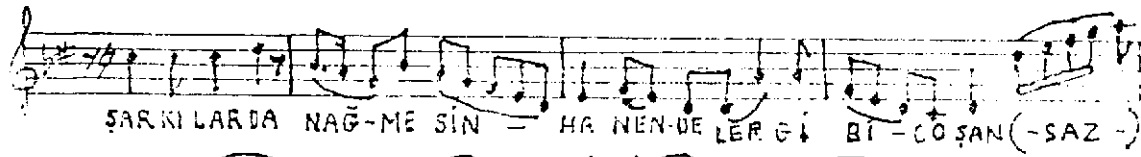
S/2.

SAFRANBOLU: 23-12-1997



ARANAĞME





NAĞ- MELER DE- ARA DIM SULTANIYE GÂH ŞAR- KISIN (-SAZ-)

SEY RET SEM- SENE LER CE DOYMAM SANA SAF RAN- BO LU (-SAZ-)

SEY RET SEM SENE LER CE - DOY MAM SA NA SAF RAN- BO LU (-SAZ-)

2 AĞIRLAŞARAK KARAR  
DOY MAM SA NA SAF RAN- BO LU

### SAFRANBOLUYA HASRET

SEN NE GÜZEL BELDESİN SAYFALARIN TÂRİH DOLU  
SEYRETSEM SENELERCE DOYMAM SANA SAFRANBOLU  
MAZİYE SORDUM BEN SENİ DEDİLER İPEK YOLU  
SEYRETSEM SENELERCE DOYMAM SANA SAFRANBOLU

DÜNDEN BİR EFSANESİN BU GÜNLERE DOĞRU TAŞAN  
ŞARKILARDA NAĞMESİN HANENDELER GİBİ COŞAN  
SEVDALİYİM EZELDEN HASRETİNLE SANA KOŞAN  
SEYRETSEM SENELERCE DOYMAM SANA SAFRANBOLU

RUHUMA DOLAN AŞKINLA HER ZAMAN KALBİMDESİN  
GÜLE SORDUM GÜLBESİN BÜLBÜLE SORDUM ONDASIN  
NAĞMELEDE ARADIM SULTANI YEGÂH ŞARKISIN  
SEYRETSEM SENELERCE DOYMAM SANA SAFRANBOLU

YAVUZ ÖZEN  
NİYAZİ ŞENGÜL